

SDS TAP Retrofit Install – Orton12

Installation of TAP Control for Models Originally
Built with the Orton 12 Key (AF3000) Control

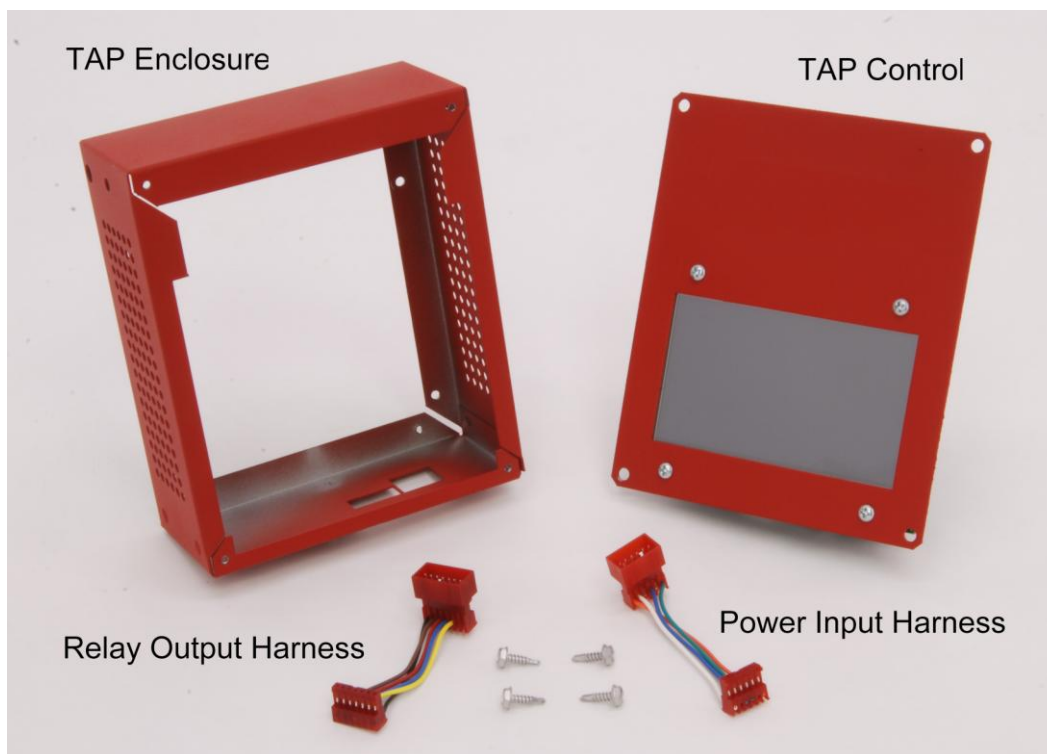
This SDS TAP Retrofit kit and installation instructions are intended for use when converting a kiln equipped with an Orton 12 Key (AF3000) control. If the model you wish to convert is not equipped with an Orton 12 Key (AF3000) control then these instructions are not for you.

Orton Ceramics Foundation product names, logos, brands, and other trademarks or images featured or referred to within this document are the property of their respective trademark holders. These trademark holders are not affiliated with SDS Industries, our products or our websites. They do not sponsor or endorse SDS Industries or any of our products.

Unplug or disconnect power from the kiln or oven before performing this procedure!

TAP Retrofit Kit Contents:

- TAP touchscreen control
- TAP Enclosure
- TAP Power Input Adapter Harness for Orton 12 Key
- TAP Relay Output Adapter Harness for Orton 12 Key
- 4, #6 Self-Tapping Sheet Metal Screws



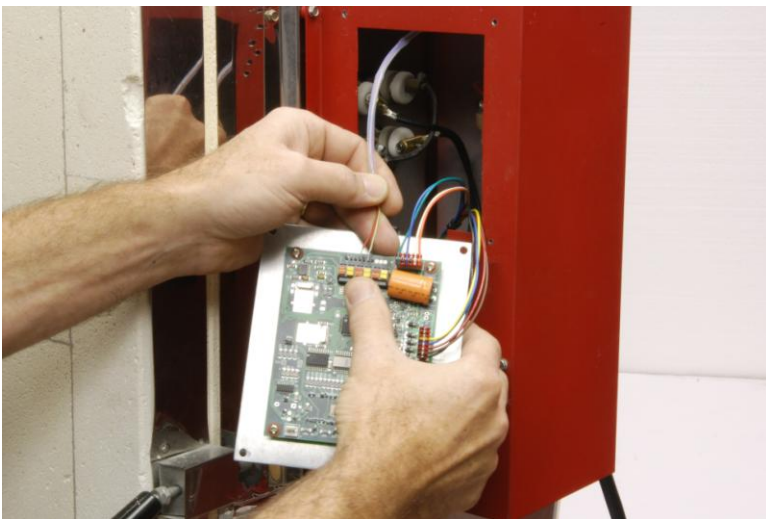
TAP Retrofit Kit Contents



Step 1:

Disconnect the kiln or oven from the power supply before proceeding with this procedure.

Remove the 4 screws that secure the existing control to the control panel.



Step 2:

Remove the thermocouple(s) leads from the control as shown.

If you have multiple thermocouples make note of their position in the kiln.



Step 3:

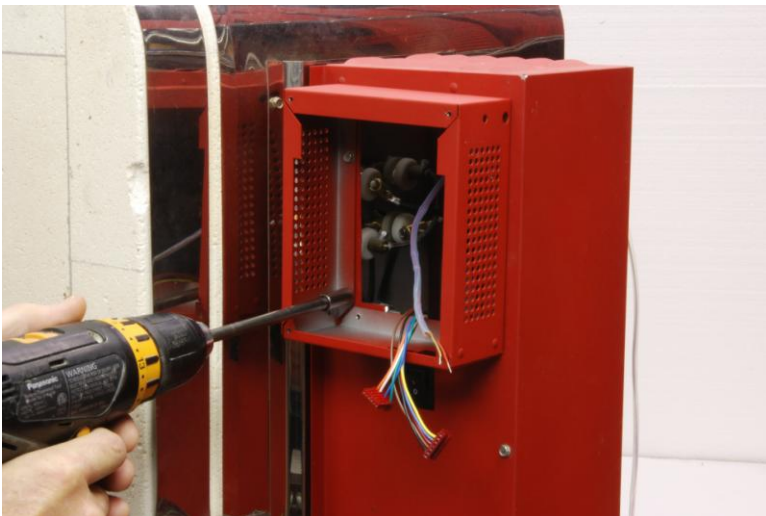
Pull the control away from the enclosure and remove the two wired sockets as shown.

Hint: It's best to grasp the sockets when removing them and not the wires themselves.



Step 4:

Disassembly is now complete.



Step 5:

Place the TAP Enclosure over the existing panel opening as shown.

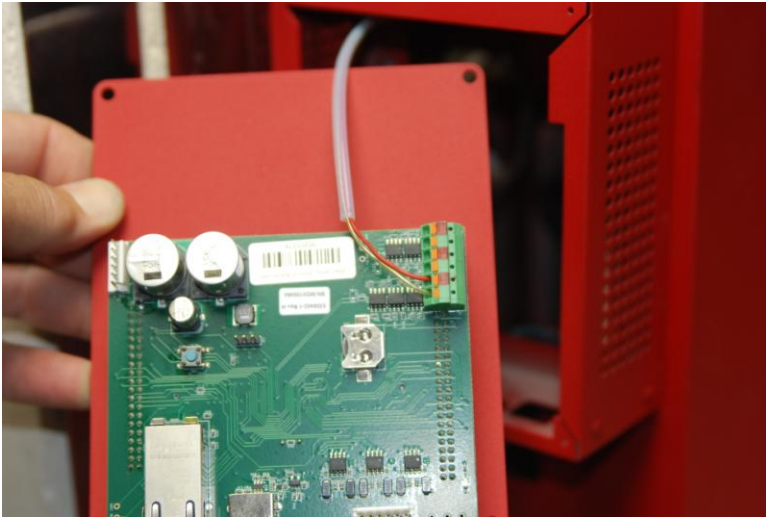
Center and square it up as best you can while taking note to surround and cover the existing control panel opening completely.

Secure the TAP enclosure to the control panel as shown using the 4, #6 self-tapping screws provided.



Step 6:

Attach the TAP adapter harnesses as shown.



Step 7:

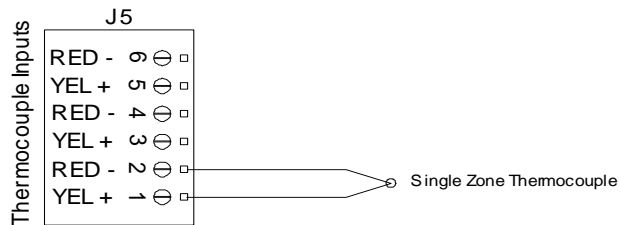
Connect the thermocouple leads to the TAP control board as shown.

For Single Zone (1 Thermocouple) the Yellow wire is connected to the lower point and the Red wire is connected to the next point up.

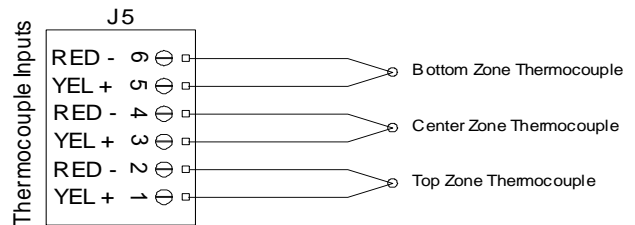
Before installing these wires we recommend that you straighten them and trim the wire until about 1/4" of wire is showing past the colored wire insulation.

It's possible that your kiln model may have more than 1 thermocouple. The schematics below will assist you in connecting both Single Zone (1 Thermocouple) and 3 Zone (3 Thermocouples). Take note on 3 Zone (3 Thermocouple) hook-ups to place the thermocouples at their proper positions. Failure to do so will result in improper operation.

1 Thermocouple Models (Single Zone)



3 Thermocouple Models (3 Zone)



Step 8:

Install the 7 PIN Relay Output harness socket and 6 PIN Power Input socket onto the TAP control as shown.



Step 9:

Place the TAP control into the enclosure as shown and secure. When placing the TAP control route the control harness wires in such a way as to place them to the right on the inside of the enclosure.

When fastening we recommend that you insert all 4 screws into the mounting holes before fully tightening. Things just line up better that way! Install is complete.